



SPRING ROAD RESTRICTIONS

Second Order 2025

Minister's Order Pursuant to section 35(1) of "The Highways and Transportation Act, 1997"

Pursuant to section 35(1) of "The Highways and Transportation Act, 1997" it is hereby ordered that, effective as stated in this Order, **at 12:01 am, Monday March 24, 2025** until further notice, vehicles other than those exempted in Part II, section 3 (2) and 3 (5) of "The Vehicle Weight and Dimensions Regulations, 2010", shall be restricted as follows:

Steering Axle

- 10.0 kg per mm (560 pounds per inch) width of tire (manufacturer's stamped dimension) to a maximum of
- 5,500 kg on the steering axle for a truck or truck tractor equipped with a single steering axle.
- 11,000 kg on the steering axle group for a truck or truck tractor equipped with a tandem axle steering group.

Other Axles

- 6.25 kg per mm (350 pounds per inch) width of tire (manufacturer's stamped dimension) to a maximum of:
- 1,650 kg (3,638 pounds) per tire, or
- 2,630 kg per tire for axles equipped with single tires with a width of 445 mm or greater.

This order does not permit the weight on any axle, axle group or vehicle from exceeding the maximum weight prescribed in the "The Vehicle Weight and Dimension Regulations, 2010" for that axle, axle group or vehicle.

The restriction does not apply to:

- Emergency vehicles,
- Ministry of Highways vehicles and municipal maintenance equipment when conducting maintenance or accessing sites on or along the restricted highway,
- SaskPower, SaskEnergy and SaskTel vehicles when accessing sites along the restricted route,
- Recreational vehicles,
- Buses,
- Farm Equipment operated or towed,
- Vehicles directly crossing a Provincial Highway at an intersecting public highway or private road.

Please note that some provincial highways and bridges are subject to special reduced or restricted weights and some are for specific periods of the year, some for precise temperatures. A detailed description of these special restrictions is listed on the last four pages of this Order.

The following Rural Municipalities will be removed from Spring Road Restrictions at 12:01 am, Monday March 24, 2025. (RM's that have opted out will no longer appear in the Order)

- 17 Val Marie
- 261 Chesterfield

The following Provincial Highways will be subject to Spring Road Restrictions at 12:01 am, Monday March 24, 2025.

- | | | | |
|--------|--|---------|---|
| No. 18 | From West Jct Hwy 36 to Rockglen | No. 202 | Jct Hwy 2 to Buffalo Pound Park |
| No. 18 | From Jct Hwy 6 to East Jct Hwy 36 | No. 220 | From Jct Hwy 20 to Jct 322 |
| No. 18 | From Jct Hwy 35 to Jct Hwy 6 | No. 301 | From Jct Hwy 1 from 200 metres north of the bridge to Buffalo Pound Park |
| No. 19 | From East Jct Hwy 42 to Elbow Access | No. 306 | From Jct Hwy 35 to Riceton |
| No. 22 | From Earl Grey to Jct Hwy 20 | No. 306 | From Riceton to Jct Hwy 6 (SPECIAL RESTRICTION – 8,000kgs) |
| No. 28 | From Jct Hwy 18 to Jct Hwy 377 | No. 307 | From Jct Hwy 7 to 13 km North of Jct Hwy 7 |
| No. 30 | From Eston Regional Park to Brock (SPECIAL RESTRICTION – 8,000kgs) | No. 308 | From Jct Hwy 8 to Grid 600 (SPECIAL RESTRICTION – 8,000kgs) |
| No. 31 | From Jct Hwy 4 to 23.1 km west (SPECIAL RESTRICTION – 8,000kgs) | No. 308 | From Grid 600 to Manitoba Border |
| No. 31 | From Herschel to grid 656 | No. 317 | From Jct 51 to 12 KM North |
| No. 31 | From 29.6 km East of Plenty to Plenty (SPECIAL RESTRICTION – 8,000kgs) | No. 318 | From 2 km N of Jct Hwy 18 to Jct Hwy 361 |
| No. 34 | From U.S. Border to Jct Hwy 13 | No. 324 | From Jct Hwy 378 to Mayfair |
| No. 35 | From Jct Hwy 48 to Jct Hwy 1 | No. 334 | From Jct Hwy 13 to 3.3 km south of Jct Hwy 339 (SEE SPECIAL RESTRICTION 8,000 Kgs) |
| No. 35 | From 3.8 km North of Jct Hwy 1 to Jct Hwy 10 | No. 339 | From Jct Hwy 334 to Jct Hwy 39 (SEE SPECIAL RESTRICTION 8,000 Kgs) |
| No. 35 | From Jct Hwy 306 to Jct Hwy 33 | No. 340 | From Radisson to Hafford |
| No. 35 | From Jct Hwy 33 to Jct Hwy 48 | No. 342 | From Jct Hwy 42 to Jct Hwy 4 |
| No. 35 | From 3.8 km North of Jct Hwy 1 to Jct Hwy 10 | No. 342 | From Jct Hwy 4 to Grid 647 (north of Lacadena) (SPECIAL RESTRICTION – 8,000kgs) |
| No. 36 | From U.S. Border to Jct Hwy 2 | No. 350 | From U.S. Border to Jct Hwy 18 |
| No. 42 | from the Jct of 367 to the Jct North Jct of 19. | No. 361 | From Manitoba Border to Jct 9 |
| No. 42 | From Jct Hwy 342 to Dinsmore | No. 364 | From Km 19.08 to Km 36.45 |
| No. 44 | From 3 km south-west of Davidson (Meridian Road) to Jct. Hwy 19 (SPECIALRESTRICTION – 8,000kgs) | No. 367 | From Jct Hwy 42 to Jct Hwy 19 |
| No. 44 | From Dinsmore to Jct Hwy 4 | No. 374 | From Jct Hwy 14 to Tramping Lake |
| No. 44 | From 3.2 Km's West of Eston to N. Jct. of 21 | No. 376 | From Asquith to Jct Hwy 40 |
| No. 44 | From 400 Meters West of the North Jct Hwy 21 to the South Jct Hwy 21 | No. 377 | From Jct Hwy 28 to Jct Hwy 6 |
| No. 47 | From Handsworth Road to Jct Hwy 1 | No. 378 | From Jct Hwy 4 to Jct Hwy 324 |
| No. 99 | From Craven to Jct Hwy 6 | | |

The following Access Roads will be subject to Spring Road Restrictions at 12:01 am, Monday March 24, 2025.

- | | | | |
|-------|--------------------|-------|---|
| No. 1 | Sintaluta Access | No. 1 | Grand Coulee Access (SPECIAL RESTRICTION – 8,000kgs) |
| No. 1 | McLean Park Access | No. 1 | North urban limits of Pense |

No. 2	Sun Valley Beach Access	No. 18	Beaubier Access
No. 2	Holdfast Access	No. 18	Gladmar Access
No. 2	Penzance Access	No. 18	Big Beaver Access
No. 2	Liberty Access	No. 20	Duval Access
No. 4	Cando Access	No. 20	Bulyea Access
No. 4	Metinota Access	No. 22	Dysart Access
No. 4	Aquadeo Access	No. 22	Earl Grey Service Road
No. 8	Tantallon Access (SPECIAL RESTRICTION – 8,000kgs)	No. 31	Herschel Access
No. 11	Bethune Access	No. 33	Osage Access Road
No. 11	Findlater Access	No. 39	Mc Taggart Service Road
No. 11	Findlater Service Road	No. 39	Wilcox Service Road
No. 11	Aylesbury Access	No. 39	Roche Percee Access
No. 11	Craik Access	No. 40	Speers Access
No. 11	Girvin Access	No. 40	David Laird Campground Access (YEAR ROUND RESTRICTION – 8,000kgs)
No. 11	Davidson South	No. 44	Plato Access
No. 13	Pangman Access	No. 44	Glidden Access
No. 13	Khedive Access	No. 48	Fairlight Access
No. 13	Trossachs Access	No. 48	Kendal Service Road
No. 13	Bellegarde Access (SPECIAL RESTRICTION – 8,000kgs)	No. 48	Odessa Service Road
No. 13	Arcola Access	No. 48	Vibank Service Road
No. 13	Forget Access (SPECIAL RESTRICTION – 8,000kgs)	No. 51	Handel Access
No. 14	Senlac Access	No. 51	Ruthilda Access
No. 15	Milden Access	No. 51	Major Access
No. 15	Sovereign Access	No. 322	Kanata Valley Access
No. 15	Semans Access	No. 322	Saskatchewan Beach Access
		No. 364	Edenwold Access

The following Rural Municipalities **will be** subject to Spring Road Restrictions **at 12:01 am, Monday March 24, 2025.**

RM No.		RM No.		RM No.	
6	CAMBRIA	68	BROKENSHELL	97	WELLINGTON
7	SOURIS VALLEY	69	NORTON	98	SCOTT
8	LAKE ALMA	70	KEY WEST	99	CALEDONIA
9	SURPRISE VALLEY	71	EXCEL	101	TERRELL
10	HAPPY VALLEY	72	LAKE OF THE RIVERS	102	LAKE JOHNSTON
11	HART BUTTE	73	STONEHENGE	121	MOOSOMIN
38	LAURIER	91	MARYFIELD	123	SILVERWOOD
40	BENGOUGH	92	WALPOLE	124	KINGSLEY
42	WILLOW BUNCH	93	WAWKEN	125	CHESTER
64	BROCK	94	HAZELWOOD	126	MONTMARTRE
65	TECUMSEH	95	GOLDEN WEST	127	FRANCIS
67	WEYBURN	96	FILLMORE	128	LAJORD

129	BRATT'S LAKE	226	VICTORY	377	GLENSIDE
132	HILLSBOROUGH	228	LACADENA	378	ROSEMOUNT
151	ROCANVILLE	250	LAST MOUNTAIN VALLEY	379	REFORD
153	WILLOWDALE	256	KING GEORGE	380	TRAMPING LAKE
154	ELCAPO	260	NEWCOMBE	381	GRASS LAKE
155	WOLSELEY	279	MOUNT HOPE	382	EYE HILL
156	INDIAN HEAD	286	MILDEN	405	GREAT BEND
157	SOUTH QU'APPELLE	288	PLEASANT VALLEY	406	MAYFIELD
158	EDENWOLD	290	KINDERSLEY	409	BUFFALO
159	SHERWOOD	292	MILTON	410	ROUND VALLEY
161	MOOSE JAW	316	HARRIS	411	SENLAC
187	NORTH QU'APPELLE	317	MARRIOTT	435	REDBERRY
189	LUMSDEN	318	MOUNTAIN VIEW	436	DOUGLAS
190	DUFFERIN	319	WINSLOW	437	NORTH BATTLEFORD
191	MARQUIS	320	OAKDALE	438	BATTLE RIVER
193	EYEBROW	321	PRAIRIEDALE	440	HILLSDALE
194	ENFIELD	322	ANTELOPE PARK	442	MANITOU LAKE
216	TULLYMET	346	PERDUE	468	MEOTA
218	CUPAR	347	BIGGAR	470	PAYNTON
219	LOGLAKETON	349	GRANDVIEW	494	Canwood
220	MCKILLOP	350	MARIPOSA	502	BRITANNIA
223	HURON	351	PROGRESS		
224	MAPLE BUSH	352	HEART'S HILL		
225	CANAAN	376	EAGLE CREEK		

Signed on behalf of the Minister on this 21th day of March 2025.



Lana Eering
 Government of Saskatchewan
 Ministry of Highways
 Manager, Highway Hotline/Emergency Planning Officer

The following Provincial Highways are subject to Spring Road Restrictions.

No. 2	From U.S. Border to St. Victor Access	No. 58	From N limits of Gravelbourg to Jct Hwy 1
No. 13	Cadillac to Junction 37	No. 221	Jct Hwy 21 to Cypress Hills Park Gate
No. 13	North Jct Hwy 21 to Alberta Border	No. 271	Maple Creek (Jct Hwy 21) to Fort Walsh
No. 18	From Ponteix Grid to Jct. 13 at Robsart	No. 321	Liebenthal (Jct Hwy 21) to 7 km East of the Alberta Border
No. 18	From Jct Hwy 2 to Ponteix Grid	No. 332	Jct Hwy 32 to 7.1 km West of Jct Hwy 32
No. 19	From Jct Hwy 18 to North Jct Hwy 363	No. 332	7.1 km West of Jct Hwy 32 to Hazlet (<i>SPECIAL RESTRICTION – 8,000kgs</i>)
No. 21	U.S. Border to West Jct Hwy 13	No. 343	Jct Hwy 4 to Simmie
No. 21	East Jct Hwy 13 to Cypress Park Entrance	No. 358	From Wood Mountain to Limerick
No. 21	Jct Hwy 1 to 12 km South of Leader	No. 363	From 43 km West of Moose Jaw to Neidpath
No. 37	U.S. Border to Climax	No. 363	Neidpath to Jct Hwy 4
No. 37	2.35 km North of Gull Lake to Cabri	No. 371	Jct Hwy 21 to Alberta Border (<i>SPECIAL RESTRICTION – 8,000kgs</i>)
No. 43	From Jct Hwy 4 to Jct Hwy 19	No. 379	McMahon to 14.66 km East of Junction No. 4
No. 44	South Jct Hwy 21 to 3.33 km West of Mantario (<i>SPECIAL RESTRICTION – 8,000kgs</i>)		
No. 44	3.33 kms West of Mantario to Alsask		
No. 58	From Jct Hwy 18 to Jct Hwy 13		

The following Access Roads are subject to Spring Road Restrictions.

No. 1	Rush Lake Access	No. 18	McCord Access
No. 1	Waldeck Access	No. 19	Kincaid Access
No. 1	Webb Access from Km 0 to 1.87 Km	No. 21	Golden Prairie Access
No. 1	Tompkins Access	No. 21	Mendham Access (<i>JCT 21 to 8.1 KM West</i>) (<i>SPECIAL RESTRICTION – 8,000kgs</i>)
No. 1	Piapot Access	No. 43	Palmer Access
No. 4	Blumehof Access (<i>SPECIAL RESTRICTION – 8,000kgs</i>)	No. 363	Coderre Access
No. 4	Rhineland Access	No. 363	Shamrock Access

The following Rural Municipalities are subject to Spring Road Restrictions.

12	Poplar Valley	107	Lac Pelletier	165	Morse
18	Lone Tree	108	Bone Creek	166	Excelsior
19	Frontier	109	Carmichael	167	Saskatchewan Landing
43	Old Post	110	Piapot	169	Pitteville
45	Mankota	111	Maple Creek	229	Miry Creek
46	Glen Mcpherson	133	Rodgers	230	Clintworth
49	White Valley	134	Shamrock	231	Happyland
51	Reno	135	Lawtonia	232	Deer Forks
74	Wood River	136	Coulee		
76	Auvergne	137	Swift Current		
77	Wise Creek	138	Webb		
103	Sutton	139	Gull Lake		
104	Gravelbourg	142	Enterprise		
105	Glen Bain	163	Wheatlands		
106	Whiska Creek	164	Chaplin		

**The following section is not part of the Order but is appended as INFORMATION:
Special Weight Restrictions on Selected Provincial Highways.**

The following highways are subject to reduced weights, year round, by regulation in accordance with the *Vehicle Weight and Dimension Regulations, 2010*

Hwy	From	To	Description
955	South abutment of the Douglas River Bridge	Northern most limit of Highway 955	Maximum GVW 41 500 kg

The following BRIDGES are restricted by Minister's ORDER to a maximum gross vehicle weight of Secondary Weights year-round. Winter Weights are not allowed.

Hwy	Bridge Location Description
2	Bridge over Little Red River from Southern Bridge Abutment to Northern Bridge Abutment. Bridge is located approximately 4.4 km south of Jct. with Hwy 355 and Hwy 2 near Spruce Home. Bridge is located on East Frontage Road.
3	Bridge over Red Deer River from Eastern Bridge Abutment to Western Bridge Abutment located approximately .5km west of Erwood, Sk.
4 Metinota Access	Bridge over Jackfish Narrows from Eastern Bridge Abutment to Western Bridge Abutment. Bridge is located in access road approximately 3.1km west of the Jct. with Hwy 4. Bridge is located on access road.
312 Gabriel Dumont Bridge	Truss Bridge over South Saskatchewan River from Eastern Bridge Abutment to Western Bridge Abutment.
334	Bridge over Willow Creek from Eastern Bridge Abutment to Western Bridge Abutment. Bridge is located approximately 18.6 km east of Avonlea, sk. and the Jct. with Hwy 339 and Hwy 334.
919	Bridge over Martineau River from Southern Bridge Abutment to Northern Bridge Abutment. Bridge is located approximately 39.5km northwest of the Jct. with Hwy 21 and Hwy 950
935	Bridge over Morin River from the Southern Bridge Abutment to the Northern Bridge Abutment. Bridge is located approximately 7km north of the Jct. with Hwy 165 and Hwy 935.
955 Clearwater Truss Bridge	Truss Bridge over Clearwater River from Southern Bridge Abutment to Northern Bridge Abutment. Bridge is located approximately - 62 km north of Jct 155 and 955 to the Clearwater Bridge.
980 Elbow Lake Access	Bridge over Midnight Creek from Eastern Bridge Abutment to Western Bridge Abutment. Bridge is located approximately .3 km west of Elbow Lake, Sk.. The bridge is located on Spirit Lake/Elbow Lake access road.

The following BRIDGES are restricted by Minister's ORDER to a maximum gross vehicle weight of Primary Weights year-round. Winter Weights are not allowed.

Hwy	Bridge Location Description
2	Northbound Bridge over Hwy 1 from Southern Bridge Abutment to Northern Bridge Abutment. Bridge is located North of Moose Jaw at Jtc. with Hwy 1 and Hwy 2
2	Southbound Bridge over Hwy 1 from Southern Bridge Abutment to Northern Bridge Abutment. Bridge is located north of Moose Jaw Sk. at Jtc. with Hwy 1 and Hwy 2
6	Bridge over Barrier River Overflow from Southern Bridge Abutment to Northern Bridge Abutment. Bridge is located approximately 25.7 km south of Melfort, Sk.

The following highways are restricted by Minister's ORDER to a maximum gross vehicle weight of 8 000 kilograms year round.

Highway	From	To
1 Caron Access	Jct Hwy 1	Hamlet of Caron
1 Grand Coulee Access	Jct Hwy 1	Village of Grand Coulee
2 Eastside Service Road near Prince Albert	Jct Boundary Street East Service Rd north	Jct Township Road (approx. 2.4 kms)
4 Blumenhof Access	Jct Hwy 4 east	Blumenhof
6 Leroy Access	Jct Hwy 6	Town of Leroy
8 Tantallon Access	Jct. Hwy 8	Village of Tantallon
12 Hepburn Access	Jct. Hwy 12	Village of Hepburn
12 Waldheim Access	Jct. Hwy 12	100 meters west of the west boundary of NW 15-42-5 W3M in the town of Waldheim.
13 Bellegarde Access	Jct. Hwy 13	Bellegarde
13 Forget Access	Jct. Hwy 13	The Village of Forget
15	Jct. Hwy 16	Jct. Hwy 9
16 Bradwell Access	Jct. Hwy 16	Village of Bradwell
21 Mendham Access	Jct Hwy 21 Mendham Access	Intersection with the North-South portion of the Municipal Alternate Truck Route
30	Eston Regional Park located at the southwest corner of Section 20, Township 23, Range 20, West 3rd Meridian	The jct. of municipal Hwy located at the north-east corner of Section 34, Township 28, Range 20, West 3rd Meridian
31	Jct. Hwy 4	Herschel Access Road
31	Grid 656 at NW corner of Section 34, Township 31, Range 17, west of the 3rd Meridian	The intersection of the Plenty grid at the NW corner, Section 21, Township 32, Range 19, west of the 3rd Meridian
39 Bienfait Access	Jct Hwy 39	Jct Hwy 18 (In the Town of Bienfait)
40 David Laird Campsite Road	Jct No. Hwy 40	Jct Hwy No. 16
41 Alvena Access	Jct Hwy 41	2nd Avenue in Village of Alvena
42	Jct Hwy 42 - Keeler Service Road/Railway Ave. S.	Keeler Service Road/Railway Ave. to RM Road 643
42 (1)	Jct Hwy 373	Jct Hwy 45 in the Town of Lucky Lake

42	From its Jct with Hwy 44 (km 43.68)	its Jct with Hwy 15 (km 59.92), for a total of 16.2 km.
44(1)	<i>Jct Hwy 19</i>	<i>Junction with the Danielson Provincial Park Access located in the southeast of Section 32, Township 26, Range 6, West of the 3rd Meridian.</i>
44(1)	<i>Jct Hwy 21</i>	<i>Westerly to the Jct with the municipal road located in the NE 1/4 of Section 24, Township 26, Range 27, west of the 3rd Meridian</i>
44(1)	<i>Jct with the municipal road located at the SW 1/4 of Section 26, Township 26, Range 27, west of the 3rd Meridian</i>	<i>Jct with the municipal road located east of Section 31, Township 26, Range 27, west of the 3rd Meridian</i>
306	Riceton	Jct Hwy 6
308	Jct Hwy 8	Jct with Primary Grid 600
310	Jct of Grid 743	Jct of Hwy No. 16
312 Laird Access	Jct Hwy 312	The Village of Laird
332	7.1 km west of Jct Hwy 32	The Village of Hazlet except for that portion between the east and west Jct of Hwy 37
334	Jct Hwy 13	3.3 km south of Jct Hwy 339
339	Village of Avonlea	Jct. of Hwy 39 except for that portion from 11.4 km west of Avonlea to 21.2 km west of Avonlea
342	Jct Hwy 4	Jct of Primary Grid 647 north of Lacadena
371	Jct Hwy 21	Alberta Border

The following highways are restricted by Minister's ORDER to a maximum gross vehicle weight of 8 000 kilograms from March 1st to November 30th each year.

Hwy	From	To
302	Cecil Ferry Road at the SE corner of Section 22, Township 48, Range 24, west of the 2nd Meridian	Jct of the municipal road located at SE corner of Section 5, Township 49, Range 22, west of second Meridian (located by the Weldon Ferry)

The following access road is restricted by Minister's ORDER to a maximum gross vehicle weight of 8 000 kilograms from March 1st to November 30th each year.

Hwy	From	To
2 Paddockwood Access	Jct Hwy 2	Grid Road intersection NE Section 23, Township 52, Range 25, W2nd Meridian

The following highway is restricted by Minister's ORDER to a maximum gross vehicle weight of 8 000 kilograms from March 15th to November 15th each year and *when the ambient temperature is above -6°C*.

Hwy	From	To
8	0.5 km North of Junction Highway 49 at Norquay	The community of Swan Plain at the south boundary of SE 27-36-1-W2M

The following Access Road is restricted by Minister's ORDER to a maximum gross vehicle weight of 8 000 kilograms from February 24 to November 15th each year and *when the ambient temperature is above -6°C*.

Hwy	From	To
35 Aylsham Access	Hwy 35 (NW corner of section 32, township 48, range 14, west of second Meridian)	Aylsham (NE corner of section 34, township 48, range 13, west of second Meridian)

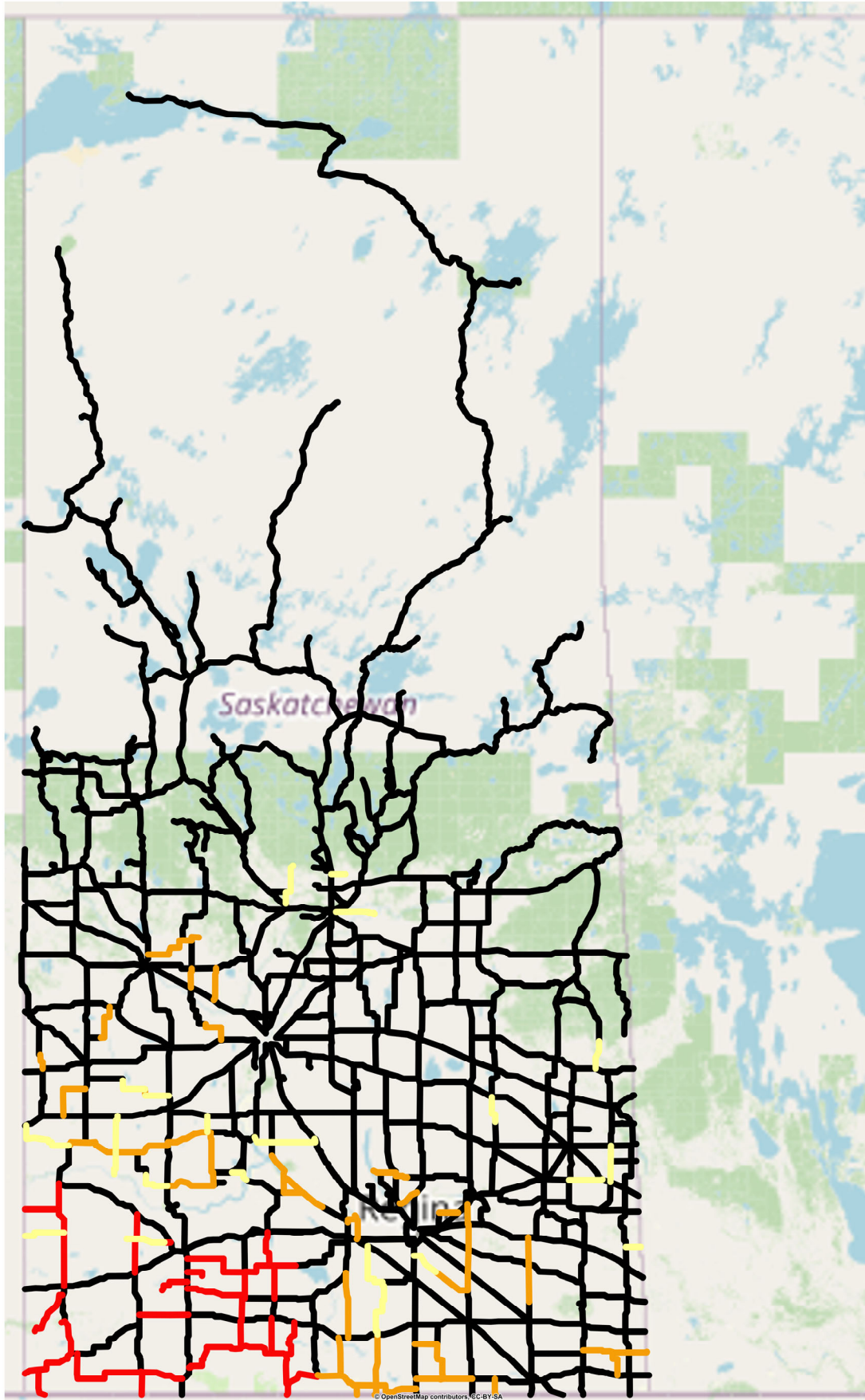
The following highway is restricted by Minister's ORDER to a maximum gross vehicle weight of 75% of primary highway weights, except during winter weight season, when winter secondary weights shall apply.

Hwy	From	To
240	Junction Highway 55	No. 240 - From Jct Hwy 55 to Prince Albert National Park SPECIAL RESTRICTIONS – 4.5 kg per mm (252 lbs/in) width of tire (manufacturer's stamped dimension) on any wheel to a maximum GVW of 22,686 kg (50,000 lbs), including the steering axle.

For detailed information on Rural Roads, call the local rural municipality or for Provincial Highway information email the Highway Hotline hotline@gov.sk.ca. The rural municipality administers and maintains the alternate haul routes. They are also responsible for issuing any overweight permits associated with the alternate haul routes.

Saskatchewan Ministry of Highways and Infrastructure provides seasonal highway restriction information on the Internet at: <http://www.saskatchewan.ca/truckingweights> under Special Weights.

Truckers can also contact the Saskatchewan Ministry of Highways, Trucking inquiry line at Toll free in Saskatchewan: 1-866-933-5290 Out of Saskatchewan: 306-933-5290 email: mhitrucking@gov.sk.ca



Winter Weight Season

- █ In Effect
- █ Not In Effect
- █ Future Restrictions

Spring Weight Season

- █ No Restrictions
- █ Restricted
- █ Future Restrictions

Special Weight Restrictions

- █ Special Weight Restrictions

Notes